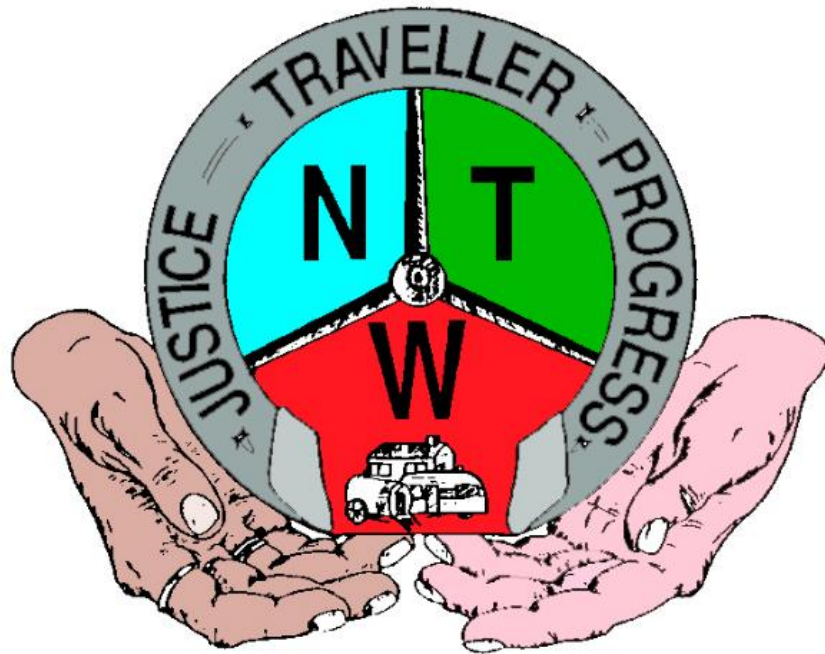


Annual Report 2016



Navan Travellers Workshops Ltd trading as

Meath Travellers Workshops

CYWS Hall, Fairgreen, Navan, Co. Meath

Tel: 046 90 27801

Email: infontw@eircom.net

www.travellerheritage.ie

Contents:

Foreword by Barbara Bolger.....	4
1. <u>Person Centred Care</u>	5
○ Census 2016	5
○ Community Engagement	6
○ Information Services	6
2. <u>Effective Care</u>	7
○ Childcare and Education – Preschool & Afterschool	7
○ Involve YouthProject	8
○ Community Development Programmes	10
➤ Family Support	10
➤ Heritage, Ethnicity, Culture and Identity	11
• Community Events	
• Traveller Living History Exhibition	
• Traveller Prison Links Programme	12
➤ Traveller Heritage Park, Carnaross	13
➤ Meath Traveller Employment Initiative (MTEI)	13
3. <u>Safe Care</u>	15
○ Health & Safety	
○ Child Protection	
○ Vulnerable Adults	
4. <u>Health and Wellbeing</u>	16
○ Mental Health	
○ Ethnicity	
○ Working with the Health and Social Care Services	
5. <u>Use of Information</u>	18
○ Finance and Administration	

Continues.....

6. <u>Use of Resources</u>	19
○ <i>Opportunities for Students</i>	
7. <u>Workforce</u>	21
○ <i>CYWS Hall Premises</i>	
➤ <i>Review of Job descriptions</i>	22
➤ <i>Staff</i>	23
○ <i>Community Employment Scheme</i>	
○ <i>Continuous professional development</i>	
8. <u>Leadership/Governance/Performance</u>	25
○ <i>Mission Statement</i>	
○ <i>Values and Principles</i>	
○ <i>Organogram of the Organisation</i>	
○ <i>Directors</i>	26
○ <i>Charities Act</i>	
○ <i>Strategic Plan</i>	
○ <i>Operational Plan</i>	
➤ <i>Key Performance Indicators and expected Outcomes</i>	
9. <u>Acknowledgements</u>	28
10. <u>Contact details</u>	29



Foreword

I was delighted and honoured to continue as chair of Meath Travellers Workshops this year, as it proved to be an important and progressive year for the organisation.

There have been many changes to the organisation especially with the moving on of key members of staff. Our emphasis needs to be on improving quality and standards for the governance of our organisation and the programmes and services we deliver. New legislation such as the Charity Act and the Governance Code was welcomed and has created a challenge, but also given us the opportunity to review the organisation, job descriptions and take stock and look towards the development of a strategic and operational plan for 2017.

Our project in Carnaross saw real progress this year, with the investment in a dedicated development worker to concentrate on funding and the viability of a sustainable social enterprise, we look forward to progressing these developments in 2017. The future of Carnaross is our priority to ensure the ethnicity, heritage, identity and culture of Travellers is recognised, celebrated and continues for many years to come.

Lastly, I would like to express sincere gratitude to everyone involved in the Meath Travellers Workshops, the Directors, staff, volunteers and everyone in the Community who has offered their support and advice over the year to us.

Barbara Bolger

Chairperson

1. Person Centred Care

The main target group for the organisation are Travellers in Co. Meath.

Census 2016

The findings from the Central Statistics Office (CSO) are now available for 2016 in regards to Irish Travellers.

Nationally there are 30,897 Irish Travellers which represent 6.6 per1000 of the general population in Ireland. There has been an increase of 5.1% since 2011, however this figure represents the households that identified themselves as Travellers and may not be a true reflection of the total amount of Irish Travellers living in Ireland

The CSO record that there are 971 Irish Travellers in Co. Meath, which represents 5.05/1000 of the general population in Co. Meath. Again, if you look at the figures collated by Meath County Council and presented to the Local Traveller Accommodation Consultative Committee, the number of Travellers living in Co. Meath could conservatively come to approximately 1600 Travellers in the county.

We outreach to Travellers using our website, social media, newsletter and word of mouth.

We have revamped our website, launched in 2016 as part of Heritage Week 2016, <http://www.travellerheritage.ie/>

We produced our newsletter on a quarterly basis, which highlights news and upcoming events and programmes. The website invites visitors to sign up to receive the newsletter direct to them via email. We use Mailchimp to process the newsletters.



In 2017, we will be developing a three year Strategic Plan. We see the value in obtaining input from as many Travellers as possible and in this regard a door to door questionnaire was carried out in Trim in late 2016; a Focus group and questionnaire took place in Navan in 2016 and Travellers had an opportunity to have their input via a Survey Monkey, as social media is a valued method of communication.

Community Engagement

We continue to link with and value our partner's, local, regional, national and international organisations. Some of these include:-

Local: *Cultur, Navan Springboard, LTACC (Local Traveller Accommodation Consultative Committee), Local Traveller Health Advisory Committee, Comhairle Na nOg, Meran Group (Meath Equality Rights and Anti-poverty Network), Youth and Family Support Forum, Meath Youth Federation, St Mary's Parish, Claremont Stadium, Meath Local Sports Partnership, Navan Girl Guides, Meath County Childcare Committee, Kells Peoples Resource Centre, Trim and Navan Family Resource Centres, Navan Library, Navan Town Council, Navan Shamrock Festival, Meath Primary Healthcare Project, Unity Centre Windtown, Meath Integration Network (MIN - SICAP), Joint Policing Committee, Citizens Information, Jobmatters, Youthreach Progression.*

Regional: *Traveller Health Unit, Regional Drugs Task Force, Traveller Suicide Working group, NUI Maynooth, Blanchardstown Institute of Technology, Athlone Institute Of Technology*

National: *National Travellers Health Network, Irish Traveller Movement, Pavee Point, The Wheel, National Traveller CDP Network, Leargas, Irish Penal Reform Trust, Traveller Prisoner Initiative, Irish Prison Service and the St Stephen's Green Trust*

Traveller Community Forum

The voice of the Traveller is important to us. We intend to be more proactive in our engagement with the Travelling community. We will set up a *Traveller Community Forum* in 2017 which is representative of all Travellers living across County Meath. Our Youth Section with Involve will consider a development of a Youth Forum.



2. Effective Care

We provide a number of Programmes which include:-

- Childcare and Education.
- Involve Youthwork Project.
- Community Development Programmes
 - Family Support.
 - Heritage, Ethnicity, Identity and Culture.
 - ✓ Community Events
 - ✓ Traveller Living History
 - ✓ Traveller Prison Links Programme
 - Traveller Heritage Park, Carnaross
- Meath Traveller Employment Initiative



Childcare and Education

The pre-school and afterschool service is overseen by the Early Childhood Education Co-ordinator, Marie McDonagh. Marie is supported by Cathy Powderly, CE Worker /Special Needs Assistant and Laura McDonagh, Cook.

Pre-School

Attendance in the Pre-School rose from 8 last year to 13 children this year. A maximum of 11 attend each day. The group is a mixture of Traveller and settled children in the 3-5 year age group. It is a well-run and well-equipped facility which provides a comfortable and safe environment for all the children attending. The Preschool curriculum includes various methods of play, arts and crafts, music and cooking. Cooking is particularly enjoyable for the children. So far the group has made a wide range of delicious treats. They have baked brownies, gingerbread men, Halloween themed buns and mini pizzas. The children also enjoy learning, drawing pictures and the chance to play both inside the pre-school itself and every day have an hour outside in the special play area.

After-school

The 15 children in our care are supported by a full childcare team. This consists of 3 staff members to look after the children. The children receive support in completing their homework; learn arts and crafts and play games. The children receive a hot meal before going home. WE provide a healthy eating programme and the children enjoy the variety of food served. On regular occasions the after-school group enjoy cooking classes. All ingredients used are seasonal and the food ranges from savoury to sweet. The children also receive help with their homework and have access to the internet for research.

The Crann Support Group

Crann Support Group oversees the quality and standards of the Little Angels childcare services. This partnership is important to MTW as an organisation to have the best service for children. The Crann Group also supports 11 different community groups throughout the county. This back up and support has ensured the children have the opportunity to avail of the excellent service provided by the Little Angels childcare staff. Crann also support access to knowledge, expertise and training of our staff members which ensures this quality is maintained.

Involve Youth Project Meath

MTW works in partnership with Involve to provide youth services. Our Youth Work department is overseen by a youth work co-ordinator Kay McCabe and 1 assistant youth worker Karen Power, 3 community employment (CE) youth workers Stephen and Patrick Gavin and Martin McDonagh, and 3 volunteers Emily Reaney and Joleen Doyle, Jamie Power. Kay and the assistant Youth Worker Karen Power are employed by Involve (formerly National Association of Traveller Centres). The 3 CE youth workers are employed by MTW. We have a panel for volunteer workers.



Kay and Karen are two of over 10 Youth Workers placed in Traveller Youth projects around the country by Involve. This link works very well for MTW Ltd as it allows us to share ideas by meeting up with lots of other Traveller youth groups around the country. Also we have been strongly involved in the National Youth Strategy workshops that have taken place over the past two years. In 2016 we were also involved in an Erasmus KA2 project to develop a toolkit for other Youth Service providers to provide, engage and retain young people from the Travelling Community in mainstream youth projects. This is an initiative led by Youth Work Ireland and links Youth in Action Northern Ireland, An Munia Tobar and Bryson, it is a trans-national project (launched 28th March 2016).

The Youth Project operates on a Monday and Wednesday evenings in Navan and runs 3 evenings a week in Trim Tuesday-Thursday in Castle Meadows Community Building with over 19hrs of direct contact with over 70 young people weekly in County Meath. We run specific activities and programmes for 4-6 weeks. These programmes are chosen by the young people themselves through focus groups and needs assessments. We also operate on occasional Saturdays and Bank Holidays throughout the year for such events such as St. Patrick's Day Parade, Youth Conferences and Football Blitz.

Some obstacles still remain such as funding issues, which is never far from our mind. It remains difficult to deliver professional cultural programmes on a very tight CDYSB Activities fund. Issues such as poor literacy skills, poor school attendance, transition into secondary school and anti-social behaviour still remain a huge problem for the young people who attend our Trim Youth Club.



The highlight of our 2016 activities was an Erasmus+ Youth Exchange for our over older group with a week's trip to Lilliput Adventure Centre in June when the Italians visited Ireland and a week in August to Tortona Italy where we visited them. The Exchange was chance for our group to experience Youth Work on a European level. It was also the first time 8 out of our group of 15 young people ever left Ireland. The Exchange was very successful and

we see it becoming a yearly event.

We also participated in many other activities such as The Witches Hovel fundraiser, Navan Pride of place, Garda Youth Awards, One World Week, National Youth Strategic Planning Conference and 1916 Celebrations to name but a few. A mural to brighten up the Windtown area in Navan was also completed as part of our Summer Activities. (See picture)



*Involve Youth Group painted mural
in Windtown area in Navan*

We retained our existing great links with many other organisations such as Trim FRC, smart and NYPD (Garda Diversion Projects), Navan School Completion Programme, local Youthreach in Navan and Trim.

The Youth work team undertakes training regularly ensuring good practise and high skills in all levels of their work.

We foresee that the project will continue to grow during 2017.



(Some of our Unity Group Windtown Navan)

Community Development Programme

Family Support

MTW continues to provide Family Support. This is particular to Traveller families seeking support when dealing with statutory agencies. The two community development workers, Ellen McDonagh (Family Support and Heritage) and Sinead Burke (Information and Outreach Services) are extremely busy helping local families' access support services.



We provided support to members of the Travelling community in areas such as:

- County Council including Housing.
- Health Services.
- Garda
- Social Protection including community welfare services.
- Citizens Information.
- Local schools.
- Other public departments.

For example one part time worker, our information and outreach worker dealt with 81 different clients in one year, which included 211 meetings.

No. clients	housing	welfare	health	gardai	education	student help	other	No. of meetings
81	109	60	26	2	7	1	6	211

Housing continues to be a pressure point for many Traveller families and MTW will be developing a Traveller accommodation discussion document. As the national crisis worsens, this new work load increases.

Drugs and alcohol together with mental health and suicide is a major concern which has led to many local Traveller families being in crisis. Supporting these families, in a Traveller sensitive way, is a major challenge for statutory and voluntary agencies.

We were sad to see Sinead our community development and outreach worker leave us in June 2016 and we thank her for her dedication and service.

Heritage Ethnicity Culture and Identity

Community Events

With this being the anniversary of the 1916 uprising, MTW joined forces with other local groups to celebrate an event that took place in Navan in 1916. The Rebel Spirit of Navan Re-enactment and Parade took place in June 2016, you can see how it panned out on you tube <https://www.youtube.com/watch?v=SPjA1sNEUA4>



*The Rebel Spirit of Navan 1916
Parade and re-enactment.
Watergate St Navan*

MTW again supported the administration and delivery of the annual St Patrick's Day Parade in conjunction with Navan Shamrock Festival. The theme for this year was Echo of 100 years 1916-2016.

Traveller Living History Exhibition

Our Barrel Top wagon forms the centre piece of our Living History project. The wagon, complete with story teller, tin-smith, campfire and tent brings this part of Traveller culture to life in an entertaining and educational way. The Living History project has visited a number of schools, traditional fairs and organisations over the past year. This project has become very effective in delivering its message. The Traveller Living History Exhibition was very proactive in 2016, highlighting how the anniversary of 1916 was important for Traveller too.



*Traveller Living History Exhibition in
Grattan Square Dungarvan
Co. Waterford*

The following table highlights some of the events that took place in 2016.

A new location for 2016 was Dungarvan Co. Waterford, which was appreciated by the local residents and Travellers came to reminisce. One of the photographs in the exhibition was of our tinsmiths Father, and one of the locals remembered him fondly.

A total of 16 events took place in 2016 as follows:

Fairs	Culture Talks	Schools	Traveller Pride	Other	Total
3	2	3	6	2	16

In many ways our Heritage programme is the jewel in the crown of MTW's work. It certainly attracts the most interest from the public, both Traveller and Settled and is as enjoyable as it is important.

Traveller Prison Links Programme

2016 was our third year and the national Traveller Prison Links Programme bought together a group of similar projects to share ideas and findings. This year Irish Prison Service supported the Programme in the amount of 33% of the funding to show their support. In 2017, they have agreed to support the Programme with 50% of the funding. In 2017 an external evaluation will take place including our Programme and two others, the evaluation will help to develop a mainstream Programme to be delivered in all Irish Prisons.

From September to March, two core MTW staff Michael and Ellen McDonagh visited the prison every Thursday, Anne Hyland also joined them for a number of sessions. Michael and Ellen worked with three different groups, Travellers from the main prison population, under 18's and "vulnerable"- these are prisoners whose safety would be compromised in the main prison population.

One CE participant had expressed an interest in working for the Prison Service and to facilitate this ambition, he joined the Programme as an understudy.

Topics for the Programme included Traveller history and



heritage, prejudice and racism and the effect prison has had on their lives. The main theme of the project is encouraging Traveller prisoners to take the educational opportunities available in prison.

Number of Prisoners that engaged in the Programme was 47 in total (38 adults and 9 youths) with an average attendance of 12 in the adult group and 3 on the youth wing.

MTW sit on the Traveller Prison Initiative Steering Group which looks at the welfare and situation of Traveller prisoners around the country. We are incredibly grateful for the support of St Stephens Green Trust and Irish Prison Service for supporting this programme of work.

Traveller Heritage Park, Carnaross, Kells, Co Meath

Meath Travellers Workshops own nearly 76 acres of land in Carnaross, Kells. We progressed the feasibility study into more tangible projects.



Brian Mongan hard at work in Carnaross

We were able to employ a Community Development Project Worker, Angela Lennon towards the end of the year with a view to look deeper at what could be done and look for funding to get the projects moving from aspiration to reality.

Our goal continues to be the development of a National Traveller Heritage Park which will be a unique experience for all visitors both Traveller and the wider community.

This project will be a long and hard process so we are breaking it up into small and progressive parts and looking as sustainable social enterprise centred around Traveller culture i.e. Equine facility and community enterprise farming. It is our aim for the future is to provide a valuable interactive, educational and entertaining facility for everyone.

Meath Traveller Employment Initiative (MTEI)

MTW works in partnership with Job Matters in providing a Traveller specific employment project. The MTEI service helps Travellers who are looking to get into employment, hold one to one meetings, identifying their skills and



interests and match them to suitable job roles. They also offer advice on appropriate training and education opportunities. We support the individual with pre-employment guidance and support, supporting with application process CVs and cover letters, interview skills and preparation. Leisa Colligan our job coach had a busy and productive year engaging with 77 Travellers in 2016.

There were 38 new participants referred to the service during the year and 39 participants exited the programme.

- 16 participants move into employment
- 2 into Internships
- 5 into Community Employment

Travellers also completed various training courses including:

- Manual Handling
- Safe Pass
- Door and Static Security
- Reach and Counterbalance Forklift Training

Some participants went back to further education attending various courses which included:

- Hairdressing
- Childcare
- Literacy and Numeracy

These participants are improving their skills and making themselves more job ready.

We have various outreach facilities within County Meath. We look forward to a productive year in 2017.



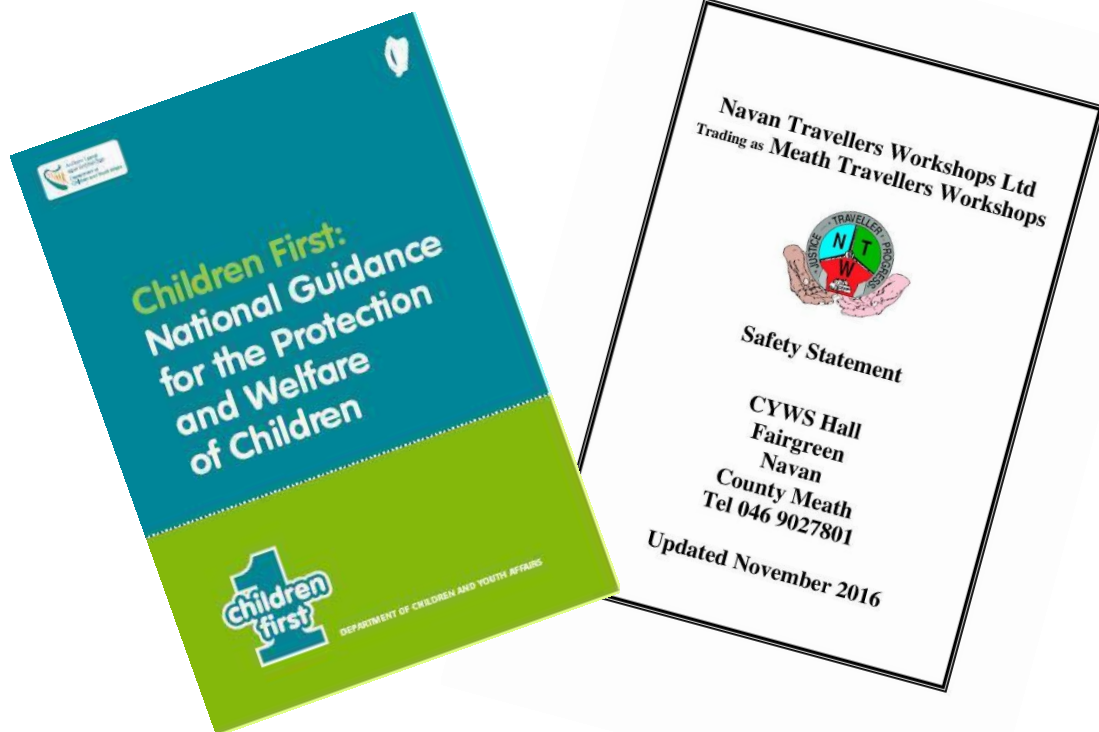
3. Safe Care

MTW adhere to *Health & Safety Policy* as required by legislation and best practice. We will revise and improve health and safety within MTW including the Carnaross Project in 2017.

We continue to MTW adhere to the higher standards in child protection and we have *Child Protection Policies* as required by legislation and best practice within our Pre-school Afterschool Services and Youth Services.

MTW, through our family support services will work towards developing a policy on Vulnerable Adults and engagement in 2017.

This is an area of work that the organisation needs to explore during 2017 in more detail for the organisation, the individual Programmes and the individual workers aligned to the Programmes.



4. Health and Wellbeing

How Travellers see themselves in the world is important to their overall health and wellbeing. The challenge for MTW, like other Traveller organisations, is to facilitate and encourage Travellers to value their identity, traditions and culture, however in reality many find this difficult. Travellers are constantly aware that they are seen and appraised as Travellers, in day-to-day situations, in a negative way: Travellers receive a message that their community is primitive, backward, stupid, and even criminal. This makes it difficult, to develop a sense of pride: and it can also create a sense of shame and a range of accompanying psychological problems. Because of the years of oppression Travellers now have internalised that oppression and that manifests itself in many ways, i.e. internalised oppression and an inferiority complex. The internalised oppression reinforced by the extended family can be and is one of the more difficult forms of oppression to deal with, because Travellers value their family above all else.



In 2016, Irish Travellers were not recognised as an ethnic group in Ireland; however they are recognized as an ethnic group in the UK and Northern Ireland. The Council of Europe mechanisms including the Framework Convention for the Protection of National Minorities, the European Commission Against Racism & Intolerance (ECRI) and a range of United Nations Treaty Bodies including the UN Committee on the Elimination of Racism and Discrimination, the UN Committee for Economic, Social & Cultural Rights and the UN Committee on the Rights of the Child called on Ireland to recognise Irish Travellers as an ethnic group. It is important to health and wellbeing of Travellers to be recognized as an ethnic group and we will continue to lobby for this to happen in 2017.

MTW collaborates with the Meath Traveller Primary Healthcare Care Project in bring forward issues relating to health for the broader community. Our family support services are increasingly responding to families in crisis with a core theme of the



impact drugs and alcohol misuse and suicide. With the development of a Strategic plan in 2017, we will be looking to work with the Health Service Executive across their Programmes (Primary Healthcare and Drug and Alcohol services) to advocate for the establishment of a Traveller Community Health Support Worker to target families in crisis.

MTW continues to participate on committees highlighting health and social care issues on the Local Traveller Health Advisory Committee LTACC, and also at a national level on the National Traveller Health Advisory Committee NTACC. During 2017 we will focus our activities on Healthy Ireland and emphasise Healthy Eating and Active Living for the Travelling and wider community.



5. Use of Information

Statement of Director's Responsibilities:

Company law requires the Directors to prepare Financial Statements for each year, which give a true and fair view of the state of affairs of the Company for that year. In preparing Financial Statements, the Directors are required to:

Select suitable accounting policies and then apply them consistently.

Make judgements and estimates that are reasonable and prudent. Prepare financial statements on a going-concern basis unless it is inappropriate to presume that the Company will continue in business.

The Directors are responsible for keeping proper Books of Account, which disclose with reasonable accuracy at any time, the financial position of the Company and to enable them to ensure that the financial statements comply with the Companies Acts 2014. They are also responsible for safeguarding the assets of the Company and hence for taking steps for the prevention and detection of fraud and other irregularities.



Finance and Administrator

Tracy Donohue our Finance Officer works hard to keep our organisation on track. In 2016 the accounts made a profit of 9,192 Euro. Considering the cuts in grants over the last number of years this is quite an accomplishment for MTW. Our focus for 2016 was the Traveller Living History Exhibition which generated an income leaving us with a profit for the year.

The continued work of Meath Travellers Workshops relies on funding and support from a wide range of sources which is crucial to our operations. We appreciate both the funding and our excellent relationships with all our sponsors. Some of these include:-

FAS, HSE Lottery Funding, HSE TUSLA, Pobal, St Stephens Green Trust, Irish Prison Service, Meath County Council, Louth Meath Education and Training Board, Meath Partnership, Involve, Crann Support Services, Department of the Environment Community and Local Government and Department of Justice and Equality.

Going forward into 2017, we hope to continue success of the Traveller Living History Exhibition which would sustain itself and also improve cultural awareness and ethnicity throughout the country.

6. Use of Resources

Work Experience Opportunities for Students

Volunteers and Students regularly request placements with our organisation. Following on from a Volunteer Management Training course we attended through Meath Volunteer Centre, we have now in place a simple contract to ensure that the expectations of the volunteer and ourselves are clear from the outset.

For students on placement, there is a structured plan in place to explore and enable them to see all areas of our work. After which they are encouraged to decide themselves if they would like to plan and deliver an initiative in a particular area.

This year Megan Daly joined us as a third year student studying Social Care in Athlone Institute of Technology for a nine week work placement working with the Coordinator in the development of the organisations Code of Governance. Megan quickly became part of the team, making good friends and has continued to keep in touch.

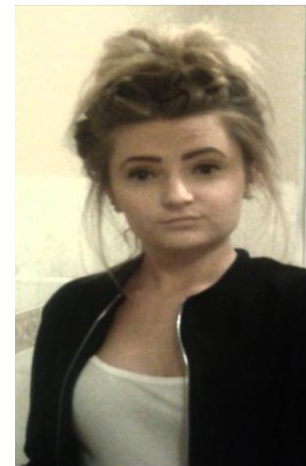
During her time in MTW she worked mainly with the Coordinator and Finance Administrator updating policies and procedures for the organisation.

As part of her college placement, Megan had to write the following report for her college...

My name is Megan Daly. I am a third year student from Athlone Institute of Technology, where I am currently studying Social Care. As part of my course I was required to do nine weeks of work placement in an area of my choice. I had no previous experience with the Traveller community and their culture, so I took this as an ideal opportunity to learn more about an area in which I had a keen interest.

I was slightly nervous during my first few days of placement as I was not familiar with the organisation. However, the warm and welcoming atmosphere that the management and staff created soon put me at ease.

I was lucky enough to be given the opportunity to be involved in the process of developing the Code of Governance. My role was to update some of the policies and procedures of MTW. I found this very enjoyable but it was also challenging for me at times. I feel proud knowing that I have been a part of this and will have made a positive difference during my time here.



I have also had the pleasure of getting to know a great group of people. Each person has taught me a lot, by kindly sharing stories about their lives. The friendly, open nature of MTW has been a very productive environment for me and I have now learned new skills and qualities that I will take with me for the future.

As my time here is coming to an end, I am able to look back on my experience and can say I have hugely enjoyed it. I will be sad to leave and will greatly miss all of the staff. I am very grateful to Meath Travellers Workshops for fulfilling my work placement and would be delighted to recommend it to fellow students in the coming years.



7. Workforce

CYWS Hall Premises

Our staff members are based in the CYWS Hall premises. We are open Monday to Friday 9:30 to 17:00.

Our staff members included the following:

- **Manager** - Michael McDonagh
- **Co-ordinator** - Anne Hyland
- **Finance Officer** – Tracy Donohue
- **Little Angels Childcare co-ordinator** - Marie McDonagh
- **Youth Work Co-ordinator** – Kay McCabe
- **Youth Worker** – Karen Power
- **Community Development and Heritage Worker** – Ellen McDonagh
- **Community and Development and Outreach Worker** – Sinead Burke (until June 2016)
- **Community Employment Supervisor** – Peter Martin
- **MTEI Facilitator** – Leisa Colligan
- **Carnaross Development Worker** – Angela Lennon (from Oct 2016)

We are in the process of reviewing all our staff members' job descriptions in light of our changing direction and intend to refocus each of our workers roles and responsibilities in 2017 to meet our commitments. We will also review and revise our staff handbook in line with our Strategic and Operational Plan including revised job descriptions.

Supportive supervision and continuous professional development is essential to a healthy organisation and to ensure the organisation remains up to date with any legislative changes. In 2017 we will review and revise our commitment to the relevant up-skilling and training of our staff.

We also have 19 Community Employment participants who work alongside our core staff members. The participants gain work experience, on the job training, informative workshops, taking part in Traveller forums and also availing of certified training taking place internally and externally.



Here is a group of CE participants taking part in a workshop with HSE

The Staff of Meath Travellers Workshops 2016



Anne Hyland



Ellen McDonagh



Michael McDonagh



Marie McDonagh



Kay McCabe and Sinéad Burke



Leisa Colligan



Peter Martin



Laura McDonagh



Angela Lennon



Tracy Donohue



Karen Power

Community Employment (CE)

There are 19 Community Employment Participants working in MTW Ltd. Peter Martin our CE Supervisor leads this project, a partnership between MTW and the Department of Social Protection (DSP). We are now in the third year of our three year contract with the DSP.

Currently the CE scheme has 19 places, eighteen are filled to date. There is one position in administration which remains to be filled. Our service to St Patricks Library is still on hold due to health and safety issues.

There was a marked improvement in the take up of training this year with most learners taking part in some form of training. Our training budget was overspent this year, following discussion with the DSP before the end of the year and there was an increase in training allowances to accommodate the extra training being requested.

Younger people, under the age of twenty five, applying for positions on the scheme. This presents a challenge as many learners are applying for monetary reasons as opposed to using the scheme for training and education. Younger people are absent of skills to assist them to be job ready. We continue to encourage them to gain additional skills enabling them to get into employment.

Our materials grant from the DSP is being spent mainly on rent and insurance. Insurance increased by 100% which is an added pressure on our materials grant. This creates pressure on other programme cost such as paint, maintenance equipment etc. as the current allocation is not adequate for our needs.

Three participants left the scheme in 2016. One participant retired, one participant left the country and the third participant went into part time employment.

There were only some minor issues with both our audits from the DSP this year all of which were resolved quickly.

There will be a lot of learners completing their three years on the scheme towards the end of this year and this will give us the opportunity to review our selection process going forward.

Overall we believe the scheme is achieving its goals and also improving the key areas of work of training, work experience and employment.

APPENDIX 2

CERTIFICATION OUTCOMES (for last Completed Project)

Project Name: Navan Travellers Workshops CLG

Project Number: 241543559

Date Achieved	Participant Name	Course Title	Awarding Body	Minor	Major	Certification Achieved
05/05/2016	Michael Doyle	Fire Safety	Ash Fire & Safe			Passed
18/02/2016	Michael Doyle	Career Preparation	FETAC	y		Passed
18/02/2016	Michael Doyle	Personal & Interpersonal skills	FETAC	y		Passed
18/02/2016	Michael Doyle	Personal Effectiveness	FETAC	y		Passed
05/05/2016	Mary Doyle	Fire Safety	Ash Fire & Safe			Passed
18/02/2016	Mary Doyle	Career Preparation	FETAC	Y		Passed
18/02/2016	Mary Doyle	Personal & Interpersonal skills	FETAC	Y		Passed
18/02/2016	Mary Doyle	Personal Effectiveness	FETAC	Y		Passed
05/05/2016	Patrick Gavin	Fire Safety	Ash Fire & Safe			Passed
05/05/2016	Stephen Gavin	Fire Safety	Ash Fire & Safe			Passed
05/05/2016	Gary Hand	Fire Safety	Ash Fire & Safe			Passed
07/09/2016	Gary Hand	Safe Pass	Navan Hire			Passed
18/02/2016	Gary Hand	Career Preparation	FETAC	Y		Passed
18/02/2016	Gary Hand	Personal & Interpersonal skills	FETAC	Y		Passed
18/02/2016	Gary Hand	Personal Effectiveness	FETAC	Y		Passed
05/05/2016	Mary Kierans	Fire Safety	Ash Fire & Safe			Passed
18/02/2016	Martin Mc Donagh	Personal & Interpersonal skills	FETAC	Y		Passed
18/02/2016	Martin Mc Donagh	Personal Effectiveness	FETAC	Y		Passed
18/02/2016	Martin Mc Donagh	Career Preparation	FETAC	Y		Passed
05/05/2016	Martin Mc Donagh	Fire Safety	Ash Fire & Safe			Passed

8. Leadership/Governance/Performance

Navan Travellers Workshops Ltd trading as Meath Travellers Workshops is a voluntary Community Development Organisation. Since 1965 it has been a partnership of Travellers and Settled people working together to improve and enhance the social and economic situation of the Travelling community in Co. Meath.

We have revised our Mission Statement and reminded ourselves that our values are Community Development.

MISSION STATEMENT

Meath Travellers Workshops prides itself on being a trusted and respected Traveller led Community Development Organisation. We are approachable, accessible and engage with Travellers and the wider community, in promoting Traveller Ethnicity and Equality for All.

PURPOSE

MTW is a Voluntary Community Development Organisation, which works as a partnership of Travellers and Settled people working together to improve and enhance the social and economic situation of the Travelling Community in County Meath and beyond.

Our values are community development principles as follows:-

- **Democratic:** All voices are heard and considered and minority rights are protected.
- **Inclusive:** A healthy community embraces diversity and recognizes that all community members have a right to be heard and participate in processes that affect their lives.
- **Non-authoritarian:** All participants are equally important and have equal input.
- **Community self determination:** Community members come together to discuss their concerns, assess options and arrive at their own conclusions and make their own decisions that are right for them.
- **Community Ownership:** Communities thrive when they develop their own assets, but also when they "own" their problems and issues.
- **Enhance natural capacities and networks:** A community developer identifies existing community assets, which includes informal networks and social support systems, or certain individuals that have particular talents or are able to help others in need and works with them.
- **Social justice and equity:** This is fundamental to community development.
- **Universality:** Services are available to everyone, without requiring means or needs testing.
- **Service Integration:** All service providers know what other services are available or being used.

Strategic Plan and Operational Plan

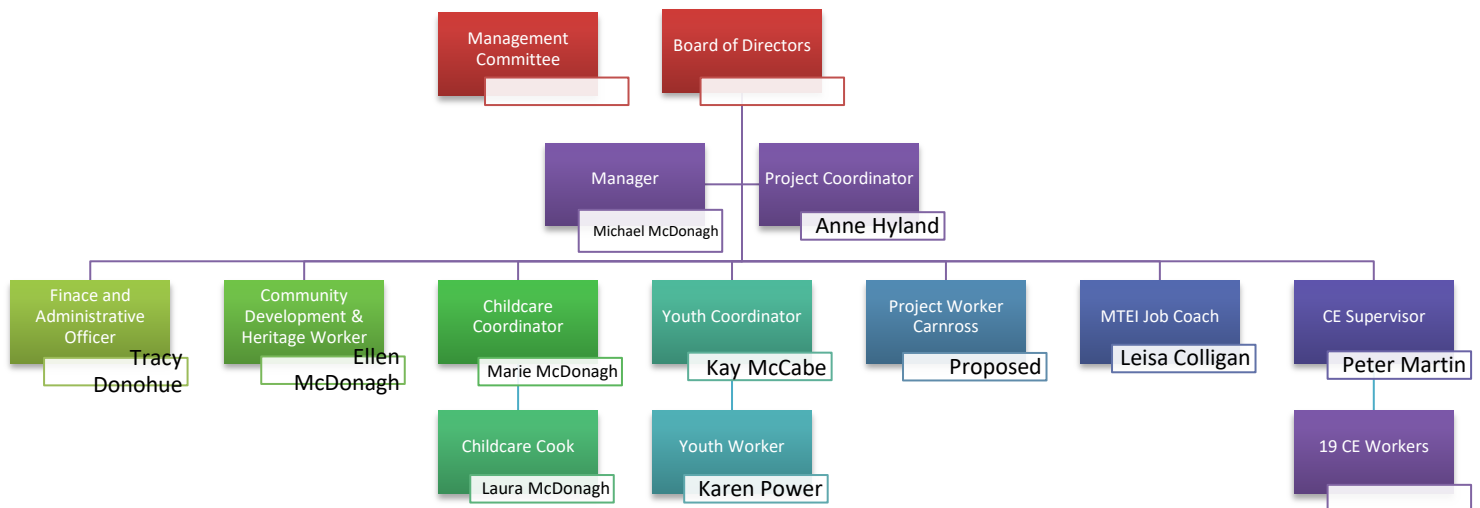
We intend to develop a three year Strategic and Operational Plan in 2017; we will also work towards the full implementation of the Governance Code within that plan.

Our Board of Directors are the following:

- Barbara Bolger – Chairperson
- Kathleen Connors (until 16/11/16)
- Marie Daly (Company Treasurer & Secretary)
- Kathleen McDonagh (until 16/11/16)
- Paddy Pryle RIP (until 16/11/16)
- Joe Reilly
- Christina Nestor
- Michael “Chaps” McDonagh (until 03/05/16)

Additional member for the Board of Management and Carnaross Sub Committee

- Leonard Callaghan
- Paddy Pryle RIP
- Chris O’Brien Lynch



MTW Organisational Map 2017

The Board of Meath Travellers Workshops 2016



Barbara Bolger

Chair



Kathleen McDonagh



Kathleen Connors



Joe Reilly



Patrick Pryle RIP - 2017



Christina Nestor



Marie Daly



Michael (Chaps)
McDonagh



Leonard Callaghan

9. Acknowledgements

Links to other organisations

We are also delighted to link in with local, regional, national and international organisations. Some of these include:-

Local: *Cultur, Navan Springboard, LTACC (Local Traveller Accommodation Consultative Committee), Local Traveller Health Advisory Committee, Comhairle Na nOg, Meran Group(Meath Equality Rights and Anti-poverty Network), Youth and Family Support Forum, Meath Youth Federation, St Mary's Parish, Claremont Stadium, Meath Local Sports Partnership, Navan Girl Guides, Meath County Childcare Committee, Kells Peoples Resource Centre, Trim and Navan Family Resource Centres, Navan Library, Navan Town Council, Navan Shamrock Festival, Meath Primary Healthcare Project, Unity Centre Windtown, Meath Integration Network (MIN - SICAP), Joint Policing Committee, Citizens Information, Jobmatters, Youthreach Progression.*

Regional: *Traveller Health Unit, Regional Drugs Task Force, Traveller Suicide Working group, NUI Maynooth, Blanchardstown Institute of Technology, Athlone Institute Of Technology*

National: *National Travellers Health Network, Irish Traveller Movement, Pavee Point, The Wheel, National Traveller CDP Network, Leargas, Irish Penal Reform Trust, Traveller Prisoner Initiative, Irish Prison Service and the St Stephen's Green Trust*

And we must not forget...

Thank You!



www.travellerheritage.ie



infontw@eircom.net
adminntw@eircom.net



CYWS Hall
Fairgreen
Navan
Co. Meath



[MeathTravellersWorkshop/](#)



TravellersMeath



046 9027801