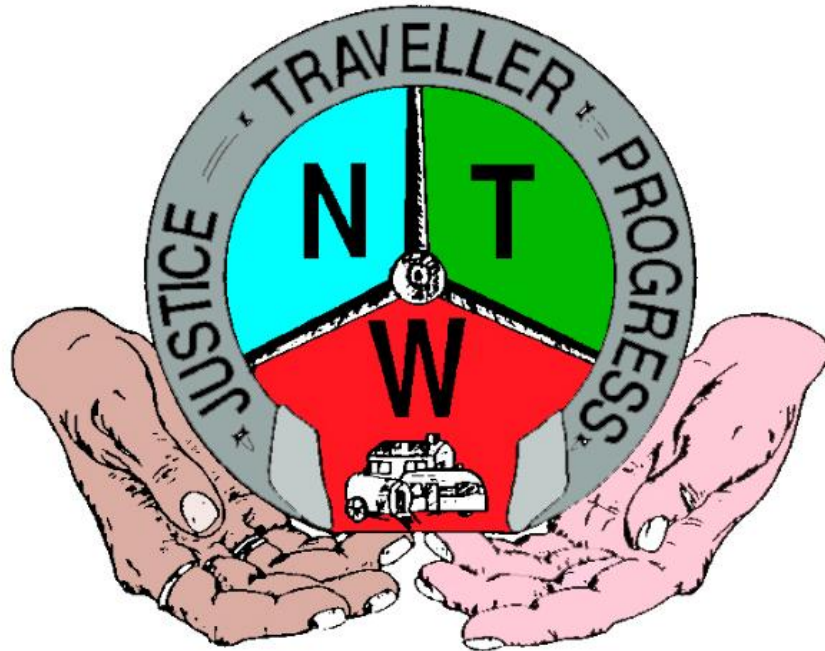


Annual Report 2017



Navan Travellers Workshops Ltd trading as

Meath Travellers Workshops

CYWS Hall, Fairgreen, Navan, Co. Meath

Tel: 046 90 27801

Email: infontw@eircom.net

www.travellerheritage.ie

Contents:

	Page
Foreword by Barbara Bolger.....	4
1. <u>Person Centred Care</u>	5
○ Strategic Plan	5
○ Traveller Community Forum	6
○ Information Provision	6
○ Community Engagement	6
2. <u>Effective Care</u>	8
○ Childcare and Education – Preschool & Afterschool	8
○ Involve YouthProject	9
○ Community Development Programmes	11
➤ Family Support	11
➤ Heritage, Ethnicity, Culture and Identity	12
• Community Events	12
• Traveller Living History Exhibition	12
• Traveller Prison Links Programme	13
➤ Traveller Heritage Park, Carnaross	14
➤ Meath Traveller Employment Initiative (MTEI)	15
3. <u>Safe Care</u>	17
○ Health & Safety	17
○ Child Protection	17
○ Vulnerable Adults	17
4. <u>Health and Wellbeing</u>	18
○ Mental Health	18
○ Ethnicity	18
○ Health challenges to the organisation	18
○ Working with the Health and Social Care Services	19
5. <u>Use of Information</u>	20
○ Finance and Administration	20

Continues.....

6. <u>Use of Resources</u>	21
○ <i>Opportunities for Students</i>	21
7. <u>Workforce</u>	22
○ <i>CYWS Hall Premises</i>	22
➤ <i>Review of Job descriptions</i>	22
➤ <i>Staff</i>	23
○ <i>Community Employment Scheme</i>	24
8. <u>Leadership/Governance/Performance</u>	26
○ <i>Mission Statement</i>	26
○ <i>Purpose and Values</i>	26
○ <i>Strategic and Operational Plan</i>	27
○ <i>Organogram of the Organisation</i>	28
○ <i>Directors</i>	28
9. <u>Acknowledgements</u>	29
10. <u>Contact details</u>	30



Foreword

I was delighted and honoured to continue as chair of Meath Travellers Workshops this year. 2017 proved to be a challenging year for the organisation with the personal loss of family members to the staff and Board members; we also lost one of our long standing inspirational directors when Paddy Pryle passed away suddenly on one of his active community expeditions. In addition we had our Manager suffering from ill health and other members of staff were also at a low ebb.

It proved to be a time when the organisation needed a bit of additional support from the Board. 2017 was a time of reflection, review, planning and change.

The premises had a huge makeover with the building of a purpose built reception area. This structure helped secure the building, provide a professional entrance to the premises and also has been of huge benefit to retaining heat in the winter!

With our commitment to improving policy standards and in order to proceed with the Governance code, we looked at our policies and procedures and other governance processes; including the development of a Strategic Plan and subsequent Operational Plan.

Our project in Carnaross saw real progress this year, with the investment in a dedicated development worker to concentrate on funding and the viability of a sustainable social enterprise, we look forward to these developments progressing further in 2018. The future of Carnaross is our priority to ensure the ethnicity, heritage, identity and culture of Travellers is recognised, celebrated and continues for many years to come.

I would like to express sincere gratitude to everyone involved in the Meath Travellers Workshops, the Directors, staff, volunteers and everyone in the Community who has supported us through this difficult period and offered their support, sincere sympathy and advice over the year. Lastly, as quoted in our Strategic Plan, TEAM means Together Everyone Achieves More.

Barbara Bolger

Chairperson

1. Person Centred Care

The main target group for the organisation are Travellers in Co. Meath.

Strategic Plan

In 2017, we developed a three year Strategic Plan which included much valued input from as many Travellers as possible. The Strategic plan included many actions that formed our Operational Plan for 2018-2021. It reminds us that Irish Travellers represent 6.6 per1000 of the general population in Ireland. (30,897 Nationally **Census 2016**) There has been an increase of 5.1% since 2011. We acknowledge that these figures are underestimated as they represent the households that identified themselves as Travellers and may not be a true reflection of the total amount of Irish Travellers living in Ireland.



The CSO census 2016 record that there were 971 Irish Travellers in Co. Meath, which represents 5.05/1000 of the general population in Co. Meath. Meath County Council and the Local Traveller Accommodation Consultative Committee estimate in November 2017, that the number of Traveller families living in Co. Meath is 430, which is a conservative estimation and we believe that there are approximately 1600 Travellers in the county.

The Strategic Plan as person centred care focuses all of our activities under the following nine headings.

1. Heritage
2. Employment & Enterprise
3. Developing Community Capacity
4. Advocacy and Lobbying
5. Accommodation
6. Health
7. Education
8. Child & Youth
9. Governance

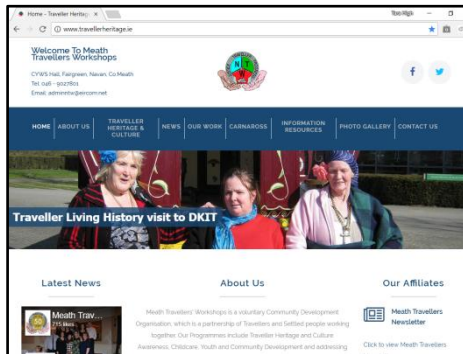
Traveller Community Forum

The voice of Travellers is important to us. We set up a *Traveller Community Forum* in 2017 to ascertain the main issues facing Travellers across County Meath; this information was included in the research for our Strategic Plan. Door to door questionnaires were also completed in Navan and Trim to capture Travellers thoughts and concerns.

Thanks to funding from Community Foundation of Ireland, a Capacity Building Course has been developed and will be delivered in 2018. Our plan is to formalise and revisit the Traveller Forum with this group and encourage the further development of a Traveller Youth Forum by Involve Youth Project Meath.

Information Provision

We outreach to Travellers using our website, social media, newsletter and word of mouth.



We have our website <http://www.travellerheritage.ie/>

We produced our newsletter on a quarterly basis, which highlights news and upcoming events and programmes. The website invites visitors to sign up to receive the newsletter direct to them via email. We use Mailchimp to process the newsletters.

We have lost key members of our staff and CE participants in this area and want to thank them all for their contribution. We are planning media training for our new CE participants and staff members.

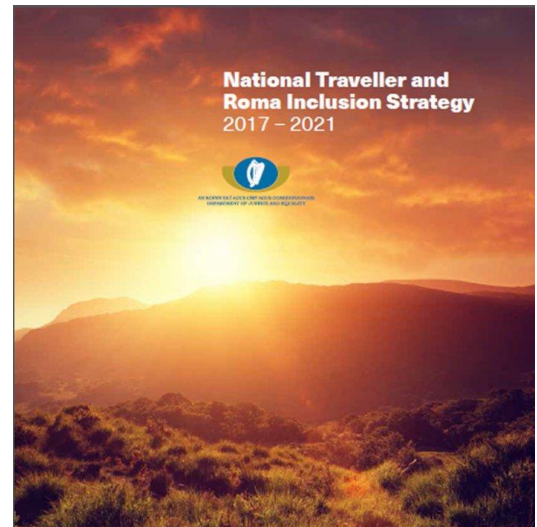
Community Engagement

Meath Local Economic & Community Plan 2016 – 2021

We were happy to be involved with and at the launch of the Meath Local Economic and Community Plan 2016 – 2021. The contents of which were cross referenced and included in our own Strategic Plan 2018-2021.



We have been involved in the full consultation process for the development of the National Traveller and Roma Integration Strategy. The Strategy informs all Government departments about the needs and issues for Travellers and actions to address these issues. The actions included in the Strategy have also been included in and are referred to in our own Strategic Plan 2018-2021.



We continue to link with and value our partner's, local, regional, national and international organisations. Some of these include:-

Local: *Cultur, Navan Springboard, LTACC (Local Traveller Accommodation Consultative Committee), Local Traveller Health Advisory Committee, Comhairle Na nOg, Meran Group(Meath Equality Rights and Anti-poverty Network), Youth and Family Support Forum, Meath Youth Federation, St Mary’s Parish, Claremont Stadium, Meath Local Sports Partnership, Navan Girl Guides, Meath County Childcare Committee, Kells Peoples Resource Centre, Trim and Navan Family Resource Centres, Navan Library, Navan Town Council, Navan Shamrock Festival, Meath Primary Healthcare Project, Unity Centre Windtown, Meath Integration Network (MIN - SICAP), Joint Policing Committee, Citizens Information, Jobmatters, Youthreach Progression.*

Regional: Traveller Health Unit, Regional Drugs Task Force, Traveller Suicide Working group, NUI Maynooth, Blanchardstown Institute of Technology, Athlone Institute Of Technology

National: *National Travellers Health Network, Irish Traveller Movement, Pavee Point, The Wheel, National Traveller Partnership, Leargas, Involve, Irish Penal Reform Trust, Traveller Prisoner Initiative, Irish Prison Service and the St Stephen's Green Trust*



2. Effective Care

We provide a number of Programmes which include:-

- Childcare and Education.
- Involve Youth work Project.
- Community Development Programmes
 - Family Support.
 - ✓ Traveller Mediation and Conflict training
 - ✓ Trim Traveller Working Group
 - Heritage, Ethnicity, Identity and Culture.
 - ✓ Community Events
 - ✓ Traveller Living History
 - ✓ Traveller Prison Links Programme
 - Traveller Heritage Park, Carnaross
- Meath Traveller Employment Initiative

Childcare and Education

The pre-school and afterschool service is overseen by the Early Childhood Education Co-ordinator, Marie McDonagh. Marie is supported by Cathy Powderly, CE Worker /Special Needs Assistant and Cook was Laura McDonagh, the post of Cook is now filled by Marie McDonagh.

Pre-School

Attendance in the Pre-School rose from 6 at the beginning of last year to 9 children; with an average attendance of 7 per day. The group is a mixture of Traveller and settled children in the 3-5 year age group and also includes children of special needs. This diverse group learn from each other, tolerance, acceptance and overcoming challenges. It is a well-run and well-equipped facility which provides a comfortable and safe environment for all the children



attending. The Preschool curriculum includes various methods of play, arts and crafts, music and cooking. Cooking is particularly enjoyable for the children. The group has made a wide range of delicious treats. They baked brownies, gingerbread men, seasonal themed buns and mini pizzas. The children also enjoy learning, drawing pictures and the chance to play both

inside the pre-school itself and every day have a minimum of an hour playing outside in the special play area.

After-school

The 15 children in our care are supported by a full childcare team. This consists of 2 staff members to look after the children. The children receive support in completing their homework; have access to the internet for research, learn arts and crafts and play games. We also have a cook that provides a healthy hot nutritious meal and eating programme. The children enjoy the variety of food served. On regular occasions the after-school group enjoy cooking classes. All ingredients used are seasonal and the food ranges from savoury to sweet.

The Crann Support Group

Crann Support Group oversees the quality and standards of the Little Angels childcare services. This partnership is important to MTW as an organisation to have the best service for children. The Crann Group also supports 11 different community groups throughout the county. This back up and support has ensured the children have the opportunity to avail of the excellent service provided by the Little Angels childcare staff. Crann also support access to knowledge, expertise and training of our staff members which ensures this quality is maintained.

Involve Youth Project Meath

Involve Meath operates out of its two youth Clubs in Navan and Trim.

Excluding office hours, Navan is on Monday and Thursday 6-8pm and in Trim 4-7pm Tuesday to Thursday. We operate a total of 13 direct contact hours a week on a normal week. This does not include extra days at conferences (6hrs x 5), youth exchanges (100hrs x 2), residential trips (160hrs) and extra events that take place through the year.

Along with our normal activities such as Homework Club, Community Garden Project and Seasonal activities (St Patrick's Day, Easter etc.) we also took part in our second Youth Exchange this year. Where we had a group of Spanish visit us in June and we brought 16 young people to Spain in August. This year was a great success as was last year.

We ran a Francis Ledwidge Centenary project called 'Francis Who?' where the young people are producing pieces of Artwork inspired by pieces of Poetry by a local Poet. We are also very busy with our KA3 funded project 'Good Nuck' which is a mental health and well-being project for young people from the Travelling Community.

This is a 18-month project with a conference held on the 1st of November. We had 65 young people and workers attend this conference.



We worked with our local Youthreach centres helping them establish a youth work level 4 programme.

We are also accommodated with 3 work placement students who are studying Youth and Community work in Dundalk IT and Blanchardstown IT. Although having extra hands is great it is also time consuming management wise. They were busy running Easter and Halloween programmes with the young people.

Funding:

Involve Meath applied for many funding applications in 2017 and have been successful with the following:

1. KA1 Youth Exchange €26,416
2. Meath Co Co Community Garden €300
3. Francis Ledwidge Meath Co Co €600
4. KA3 Structured Dialogue Good Nuck € 36,212
5. Meath Sports Partnership Kayak Programme €35,000
6. CYPSC/ Healthy Ireland Box Smart €2500

We continued our very productive relationships with many other organisations such as Trim FRC, Smart and NYPD (Garda Diversion Projects), Navan School Completion Programme, local Youthreach in Navan and Trim.

The Youth work team undertakes training regularly ensuring good practise and high skills in all levels of their work. The training this year has gone to a European level with the Youth Worker and Co-ordinator training Internationally.

Training included Safe talk Ireland, Dig It Up- Italy, No Hate Speech-Slovenia, Portugal and Ireland, Digital Photography for Youth Work- Dublin, Exploring Volunteering in Europe- Brussels Children's officer- Navan

Involve Meath has gone from strength to strength in the past few years. We are always planning new and exciting programmes to challenge our young people and ourselves as staff. We like to try something new each year. We foresee that the project will continue to grow during 2018.



Community Development Programme

Family Support

MTW continues to provide Family Support. This is particular to Traveller families seeking support when dealing with statutory agencies. The community development worker Ellen McDonagh Family Support and Heritage is extremely busy helping local families' access support services.

We provided support to members of the Travelling community in areas such as:

- Accommodation including County Council and Private landlords
- Social Protection including community welfare services and disability allowance.
- Health Services.
- Garda, Justice System
- Local schools and Education
- Discrimination and Mediation
- Other public departments.

We have one part time community development worker working in the areas of Family Support, Community Events, and Traveller Heritage

No. clients	housing	welfare	health	gardai	education	student help	mediation	other	No. of meetings
124	119	60	26	4	17	5	5	7	243

Housing continues to be a pressure point for many Traveller families and MTW will be developing a Traveller accommodation discussion document. As the national crisis worsens, this new work load increases.

Drugs and alcohol together with mental health and suicide is a major concern which has led to many local Traveller families being in crisis. Supporting these families, in a Traveller sensitive way, is a major challenge for statutory and voluntary agencies. With this in mind MTW submitted an application to develop a Traveller Family resource Centre under Tusla Child and Family Agency. There were many applications and unfortunately we were unsuccessful on this occasion. We will continue to advocate for such a resource centre from Tusla and seek from HSE additional supports for Travellers around crisis health situations.

Traveller Mediation & Conflict

A training course took place in NUI Maynooth Traveller Mediation & Conflict, our Manager provided Traveller culture awareness to the participants of this course. 75% of participants that signed up completed the course and an award ceremony took place in May 2017.

Ongoing mediation services need to be available to Traveller families and Gardai and other agencies, and it is important that Travellers gain training and guidance to provide positive influence in this process.

MTW have provided mediation in situations in the midlands, north east and in Dublin. Thankfully we recognise that 2017 was a quieter year for Traveller feuding.

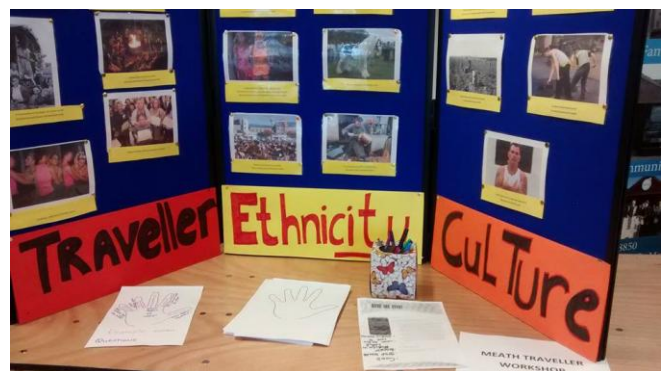
Trim Traveller Working group

This multi agency group includes Traveller representatives from Trim. The working group developed a Personal Development Plan and applied for funding, which was successful. The Traveller women in Trim participated in sessions that included personal development, healthy eating and arts and craft. The group also collected information from the Traveller families to develop a Housing Paper which will be presented to Meath County Council Local Traveller Accommodation Consultative Committee in 2018.

Heritage Ethnicity Culture and Identity

Community Events

MTW again supported the MIN Meath Integration Network, under SICAP. This included being involved in the planning, administration and delivery of the Meath Anti Racism Event that took place in Claremont Stadium in March. MTW are also involved in the administration and delivery of the annual St Patrick's Day Parade in conjunction with Navan Shamrock Festival. The theme for 2017 was Cartoon Characters.



Traveller Living History Exhibition

Our Barrel Top wagon forms the centre piece of our Living History project. The wagon, complete with story teller, tin-smith, campfire and tent brings this part of Traveller culture to life in an entertaining and educational way. The Living History project has visited a number of schools, traditional fairs and organisations over the past year. This project has become very effective in delivering its message.



A total of 9 events took place in 2017, including a visit that bought interest from the PSNI

Fairs	Culture Talks	Schools	Traveller Pride	Other	Total
0	2	1	5	1	9

In many ways our Heritage programme is the jewel in the crown of MTW's work. It certainly attracts the most interest from the public, both Traveller and Settled and is as enjoyable as it is important.

Traveller Prison Links Programme



2017 was our fourth year and the national Traveller Prison Links Programme bought together a group of similar projects to share ideas and findings. This year Irish Prison Service supported the Programme in the amount of 50% of the funding to show their support. In November 2017 an external evaluation commenced including our Programme and two others, the evaluation

will help to develop a mainstream Programme to be delivered in all Irish Prisons. From September to March, two core MTW staff Michael and Ellen McDonagh visited the prison every Thursday, Anne Hyland also joined them for a number of sessions. Michael and Ellen worked with Travellers from the main prison population, looking at the Peer Support group method and in the afternoons working on a Traveller Family Tree project.

One CE participant had expressed an interest in working for the Prison Service and to facilitate this ambition, he joined the Programme as an understudy.

Topics for the Programme included Traveller history and heritage, prejudice and racism and the effect prison has had on their lives. The main theme of the project is encouraging Traveller prisoners to take the educational opportunities available in prison.

Number of Prisoners that engaged in the Programme in 2017 was 48 in total with an average attendance of 17 attending each group session.

An external evaluation commenced in 2017 and will be completed mid 2018. This evaluation is looking at four Traveller Peer Support Programmes in four different prisons. This evaluation will inform and effect the mainstreaming of Traveller Peer Support Programmes around the Prisons in Ireland under the Traveller Prison Initiative Steering Group which looks at the welfare and situation of Traveller prisoners around the country. MTW are recognised for the innovative work that has taken place and were invited to hold a place on this group.

We are incredibly grateful for the support of St Stephens Green Trust and Irish Prison Service for financing this programme of work.

Traveller Heritage Park, Carnaross, Kells, Co Meath

Meath Travellers Workshops own nearly 76 acres of land in Carnaross, Kells. We progressed the feasibility study into more tangible projects.

The Carnaross Community Development Worker Angela Lennon, developed working plans for two projects, a Snail Farm and a Community Farm. Her contract came to an end in the Spring.

In the latter part of the year, we were able to employ a new Carnaross Community Development Project Worker, Marina Cunningham with a view to look deeper at what could be done and look for funding to get the projects moving from aspiration to reality. Through the interview process for this post it was suggested to have a Traveller working alongside the Carnaross Community Development worker to support each other and to mentor a Traveller towards possible future employment.

Our goal continues to be the development of a National Traveller Heritage Park which will be a unique experience for all visitors both Traveller and the wider community.

This project will be a long and hard process so we are breaking it up into small and progressive parts and looking as sustainable social enterprise centred around Traveller culture i.e. Equine

facility and community enterprise farming. It is our aim for the future is to provide a valuable interactive, educational and entertaining facility for everyone. Equine Insurance still proves to be an issue with many Horse projects around Ireland.

Meath Traveller Employment Initiative (MTEI)

MTW works in partnership with Job Matters in providing a Traveller specific employment project. The MTEI service helps Travellers who are looking to get into employment, hold one to one meetings, identifying their skills and interests and match them to suitable job roles. They also offer advice on appropriate training and education opportunities. They give individual with pre-employment guidance and support, supporting with application process CVs and cover letters, interview skills and preparation. Leisa Colligan our job coach had a busy and productive year engaging with 75 Travellers in 2017.

There were 44 active participants who were in employment with support during the year.

17 active participants exited the service while in employment during the year 7 into open employment, 2 joined TUS , 6 joined a Community Employment Programme, and 2 joined Gateway.

40 participants were referred to the service in the year.



Travellers also completed various training courses including:

- Manual Handling
- Safe Pass
- Door and Static Security
- Reach and Counterbalance Forklift Training

Some participants went back to further education attending various courses which included:

- Hairdressing

One participant availed of an Apprenticeship as a Construction Plant Operator

These participants are improving their skills and making themselves more job ready.

We have various outreach facilities within County Meath particularly in Navan and Trim. We look forward to a productive year in 2018.

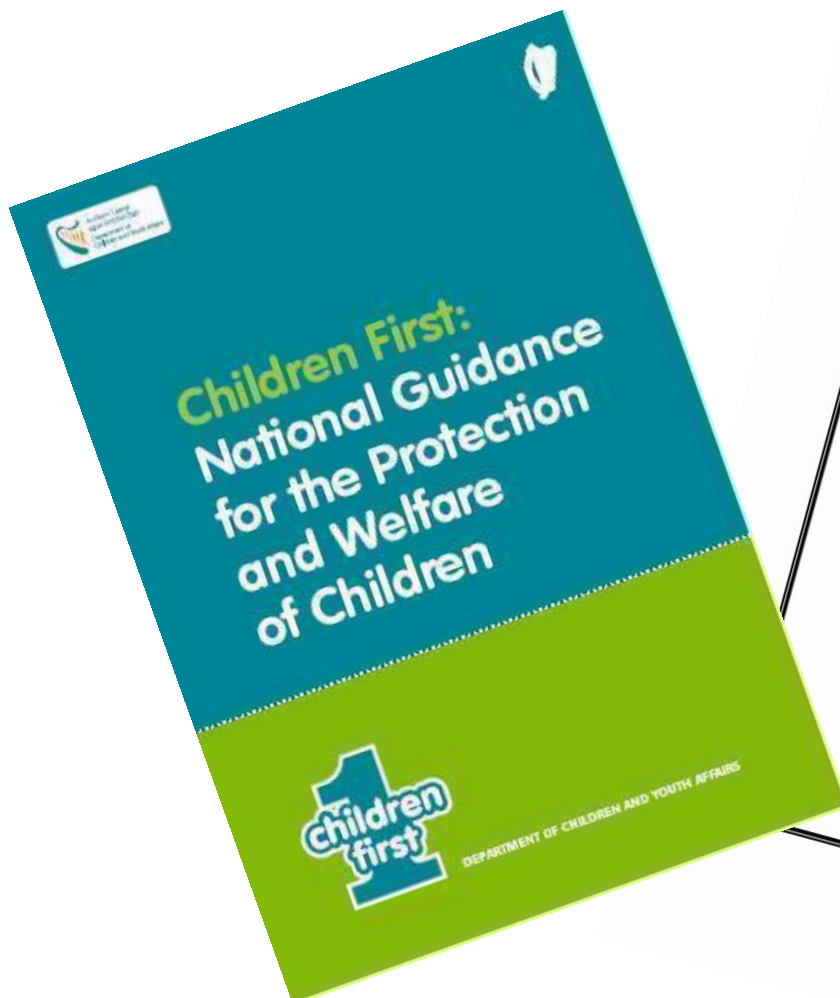


3. Safe Care

MTW adhere to *Health & Safety Policy* as required by legislation and best practice. We will revise and improve health and safety within MTW including the Carnaross Project in 2018.

MTW continue to adhere to the higher standards in child protection and we have *Child Protection Policies* as required by legislation and best practice within our Pre-school Afterschool Services and Youth Services. Children's First online course will be completed by all members of staff and CE participants in the next few months.

Following the work carried out in Wheatfield Prison, the area of vulnerable adults is work that the organisation looks to explore in 2018 in more detail. Looking at different family support methods and some established Programmes, with a view to piloting a more culturally appropriate Programme for Travellers.



4. Health and Wellbeing

How Travellers see themselves in the world is important to their overall health and wellbeing. The challenge for MTW, like other Traveller organisations, is to facilitate and encourage Travellers to value their identity, traditions and culture, however in reality many find this difficult. Travellers are constantly aware that they are seen and appraised as Travellers, in day-to-day situations, in a negative way: Travellers receive a message that their community is primitive, backward, stupid, and even criminal. This makes it difficult, to develop a sense of pride: and it can also create a sense of shame and a range of accompanying psychological problems. Because of the years of oppression Travellers now have internalised that oppression and that manifests itself in many ways, i.e. internalised oppression and an inferiority complex. The internalised oppression reinforced by the extended family can be and is one of the more difficult forms of oppression to deal with, because Travellers value their family above all else.

We were delighted that on 1st March 2017 the State Officially recognised Irish Travellers as an ethnic group in Ireland. It was important to health and wellbeing of Travellers to be recognized as an ethnic group.



MTW collaborates with the Meath Traveller Primary Healthcare Care Project in bringing forward issues relating to health for the broader community. Our family support services are increasingly responding to families in crisis with a core theme of the impact drugs and alcohol misuse and suicide. With the development of the Strategic plan 2018-2021, we will be looking to work with the Health Service Executive across their Programmes (Primary Healthcare and Drug and Alcohol services) to advocate for the establishment of a Traveller Community Health Support Worker to target families in crisis.

Lifestyle and health issues had a huge impact on the organisation in 2017. During the year many Traveller families tragically lost family members, some sadly caused by suicide or accidental overdose. Two members of staff lost a close family member and two Directors were affected by the sudden death of family members. We sadly had to say goodbye to Paddy Pryle, our long standing Director and good friend, who died whilst inspiring community activities over in Canada. All will be sadly missed, may they Rest in Peace. Our sincere sympathy is extended to the families and friends of the deceased.

MTW continues to participate on committees highlighting health and social care issues on the Local Traveller Health Advisory Committee LTACC, and also at a national level on the National Traveller Health Advisory Committee NTACC. During 2018 we will focus our activities on Healthy Ireland and emphasise Healthy Eating and Active Living for the Travelling and wider community.



5. Use of Information

Statement of Director's Responsibilities:

Company law requires the Directors to prepare Financial Statements for each year, which give a true and fair view of the state of affairs of the Company for that year. In preparing Financial Statements, the Directors are required to:

Select suitable accounting policies and then apply them consistently.

Make judgements and estimates that are reasonable and prudent. Prepare financial statements on a going-concern basis unless it is inappropriate to presume that the Company will continue in business.

The Directors are responsible for keeping proper Books of Account, which disclose with reasonable accuracy at any time, the financial position of the Company and to enable them to ensure that the financial statements comply with the Companies Acts 2014. They are also responsible for safeguarding the assets of the Company and hence for taking steps for the prevention and detection of fraud and other irregularities.



Finance and Administrator

In 2017 we had two changes of Finance Administrator which was a challenge to the organisation. In 2017 the accounts made a profit of 17311 Euro. Considering the cuts in grants over the last number of years this is quite an accomplishment for MTW. In 2017 our NTP funding was increased by 10%.

The continued work of Meath Travellers Workshops relies on funding and support from a wide range of sources which is crucial to our operations. We appreciate both the funding and our excellent relationships with all our sponsors. Some of these include:-

FAS, HSE Lottery Funding, HSE TUSLA, Pobal, St Stephens Green Trust, Irish Prison Service, Meath County Council, Louth Meath Education and Training Board, Meath Partnership, Involve, Crann Support Services, Department of the Environment Community and Local Government and Department of Justice and Equality.

Going forward into 2018, we hope to continue success of the Traveller Living History Exhibition which would sustain itself and also improve cultural awareness and ethnicity throughout the country.

6. Use of Resources

Work Experience Opportunities for Students

Volunteers and Students regularly request placements with our organisation. Following on from a Volunteer Management Training course we attended through Meath Volunteer Centre, we have now in place a simple contract to ensure that the expectations of the volunteer and ourselves are clear from the outset.

For students on placement, there is a structured plan in place to explore and enable them to see all areas of our work. After which they are encouraged to decide themselves if they would like to plan and deliver an initiative in a particular area.

This year we had the pleasure of working with

- Juliette Haughton from Blanchardstown IT
- Conor Gartland from NUI Maynooth
- Clair Donohue Secretarial Course
- Susan Connors from Beaufort College
- Margaret Reilly through MTEI and
- Leona Doyle from Navan Youthreach Progression



Their work included working with the MIN interagency group on the Anti-Racism Day Event in March, which took place in Claremont Stadium.

Anti-Racism Day Event

Don't be divided, Stay UNITED
European Action Week Against Racism 2017

24th March, 2pm-6pm
Venue: **Claremont Stadium Navan**

FAMILY FUN!

- Face Painting
- Lego Activities
- Sports Activities (FAJ)
- And many more

EVERYONE ARE WELCOME!

FREE WORKSHOPS:

- "Anti-Racism Workshop" 3pm-4pm
- "Rights and Entitlements" 4pm-4:30pm
- "Starting a Small Business" 4:30pm-5pm
- "Equality Workshop" 5pm-5:30pm
- "Introduction to Culture & Traditions of the Traveller Community" 5:30pm-6pm

FREE TRADITIONAL FOOD AND MUSIC FROM DIFFERENT CULTURES!

Come along and Celebrate Cultural Diversity and Ethnicity. Fun Music, Dance, Sample Traditional Food, Workshops, Information Stands, Face painting and much more.....

To RSVP contact Cultur on 0469093120 or info@cultur.ie

Cultur Migrants Centre, Meath Partnership, Meath CC, LMETB, Mooney, RNAIL, Meath Volunteer Centre, Kells People's Resource Centre, The Bricks Club, Meath Traveller Workshops, FAJ, SIP1U, K.P.B.C, Culture Education Centre, Fallow Heath, Newcastle, Navan CC, Navan Migrant Women's Group, Kells Migrants, Trim FHC, NCE, Irish Girl Guides, Cultur Polish Saturday school, Russian School, Lithuanian School



Some students helped with administration in the office and some helped to keep the premises clean and tidy.

7. Workforce

CYWS Hall Premises

Our staff members are based in the CYWS Hall premises. We are open Monday to Friday 9:30 to 17:00. The premises of MTW were revamped in 2017 with a purpose built reception area which provided a more professional, warmer atmosphere and secure entrance to the building. This initiative also provided much needed office space for the Reception and admin staff.

Our staff members included the following:

- **Manager** - Michael McDonagh
- **Co-ordinator** - Anne Hyland
- **Finance Officer** – Tracy Donohue, Elizabeth Sowunmi and Niamh McCann
- **Little Angels Childcare co-ordinator** - Marie McDonagh
- **Little Angels Cook** – Laura McDonagh and Marie McDonagh
- **Youth Work Co-ordinator** – Kay McCabe
- **Youth Worker** – Karen Power
- **Community Development and Heritage Worker** – Ellen McDonagh
- **Community Employment Supervisor** – Peter Martin
- **MTEI Facilitator** – Leisa Colligan
- **Carnaross Development Worker** – Angela Lennon and Marina Cunningham

We are in the process of reviewing all our staff members' job descriptions in light of our changing direction and intend to refocus each of our workers roles and responsibilities in 2018 to meet our commitments. We will also review and revise our staff handbook in line with our Strategic and Operational Plan including revised job descriptions.

Supportive supervision and continuous professional development is essential to a healthy organisation and to ensure the organisation remains up to date with any legislative changes. In 2018 we will review and revise our commitment to the relevant up-skilling and training of our staff.

We also have 19 Community Employment participants who work alongside our core staff members. The participants gain work experience, on the job training, informative workshops, taking part in Traveller forums and also availing of certified training taking place internally and externally.



Here is a group of CE participants taking part in a workshop with HSE in 2017

		
Michael McDonagh Manager	Niamh McCann Finance Administrator	Marina Cunningham Carnaross Community Development Worker
		
Ellen McDonagh Community Development Worker	Leisa Colligan Job Coach MTEI	Anne Hyland Co-ordinator
		
Marie McDonagh Childcare Co-ordinator	Kay McCabe & Karen Power Youth Co-ordinator and Youth worker	Peter Martin Community Employment Supervisor

Community Employment (CE)

There are 19 Community Employment Participants working in MTW. Peter Martin our CE Supervisor leads this project, a partnership between MTW and the Department of Social Protection (DSP). We are just completing our third year of our three year contract with the DSP.

Currently the CE scheme has 19 places, seventeen are filled to date. There are two positions in administration which remain to be filled. Our service to St Patricks Library is still on hold due to health and safety issues.

All participants took part in some form of training this year with a total of nine participants completing a FETAC level three major award during the year. Our training budget was overspent this year, following discussion with the DSP before the end of the year and there was an increase in training allowances to accommodate the extra training being requested.

There is a marked drop in the number of people applying for positions on CE schemes due to the improvement in the economy which will present problems going forward as places will be harder to fill.

Our materials grant from the DSP is being spent mainly on rent and insurance. Insurance increased by 100% which is an added pressure on our materials grant. This creates pressure on other programme cost such as paint, maintenance equipment etc. as the current allocation is not adequate for our needs. A request was made to have the materials budget increased by all CE schemes to help address the problem of increased insurance costs but as yet there has been no increase made.

Five participants left the scheme in 2017. One participant left due to pregnancy issues, two remain unemployed and two participants found part time employment.

There were only some minor issues with both our audits from the DSP this year all of which were resolved quickly.

There will be a lot of learners completing their three years on the scheme towards the end of this year and this will give us the opportunity to review our selection process going forward.

Overall we believe the scheme is achieving its goals and also improving the key areas of work, training and employment.

Three year plan 2.pdf - Adobe Reader

File Edit View Window Help

Open [Icons] 11 / 13 94.1% [Icons]

Tools Fill & Sign Comment Extended

This file includes fillable form fields.
You can print the completed form and save it to your device or Acrobat.com.

Highlight Existing Fields

CERTIFICATION OUTCOMES
(for last Completed Project)

Project Name: Navan Travellers Workshops CLG Project Number: 241644479

Date Achieved	Participant Name	Course Title	Awarding Body	Minor	Major	Certification Achieved
11/05/2017	Michael Doyle	Employability Skills	FETAC		y	Passed
11/05/2017	Gary hand	Employability Skills	FETAC		Y	Passed
11/05/2017	Mary Doyle	Employability Skills	FETAC		y	Passed
11/05/2017	Martin Mc Donagh	Employability Skills	FETAC		y	Passed
11/05/2017	Brian Mongan	Employability Skills	FETAC		y	Passed
11/05/2017	Theresa Rattigan	Employability Skills	FETAC		y	Passed
11/05/2017	Martin Stokes	Employability Skills	FETAC		y	Passed
11/05/2017	Anthony Stokes	Employability Skills	FETAC		y	Passed
11/05/2017	Leanne Mc Donagh	Employability Skills	FETAC		y	Passed
29/03/2017	Patrick Gavin	Fork Truck Licence				Passed
12/04/2017	Michael Lawrence	Safe pass				Passed
12/04/2017	Michael Lawrence	Manual Handling				Passed
14/06/2017	Martin Mc Donagh	Course Title_Row_13				Passed
29/03/2017	Michael Mc Donagh	Fork Truck Licence				Passed
29/03/2017	Martin Tormay	Fork Truck Licence				Passed
24/04/2017	Dorota Sowula	Bookeeping	Fetac	y		Passed
14/06/2017	Patrick Gavin	Safe Pass				Passed

Fill & Sign Tools

- Add Text
- Add Checkmark
- Place Initials
- Place Signature

Send or Collect Signatures

Work with Certificates

This is the Training Outcomes for Community Employment Participants for 2017

7. Leadership/Governance/Performance

Navan Travellers Workshops CLG trading as Meath Travellers Workshops is a voluntary Community Development Organisation. Since 1965 it has been a partnership of Travellers and Settled people working together to improve and enhance the social and economic situation of the Travelling community in Co. Meath. Our Mission Statement reminds us that our values are Community Development. We have included our Credo, as we feel this is of great importance.

MISSION STATEMENT

Meath Travellers Workshops prides itself on being a trusted and respected Traveller led Community Development Organisation. We are approachable, accessible and engage with Travellers and the wider community, in promoting Traveller Ethnicity and Equality for All.

CREDO

We recognise that meaningful change for Travellers can only take place when we have both the skills and confidence to organise ourselves and articulate our own needs and this Organisation can best achieve this by supporting the appropriate inclusion of Travellers with area-based Programmes of Local, Social & Economic development”.

PURPOSE

MTW is a Voluntary Community Development Organisation, which works as a partnership of Travellers and Settled people working together to improve and enhance the social and economic situation of the Travelling Community in County Meath and beyond.

Our values are community development principles as follows:-

- **Democratic:** All voices are heard and considered and minority rights are protected.
- **Inclusive:** A healthy community embraces diversity and recognizes that all community members have a right to be heard and participate in processes that affect their lives.
- **Non-authoritarian:** All participants are equally important and have equal input.
- **Community self determination:** Community members come together to discuss their concerns, assess options and arrive at their own conclusions and make their own decisions that are right for them.
- **Community Ownership:** Communities thrive when they develop their own assets, but also when they "own" their problems and issues.
- **Enhance natural capacities and networks:** A community developer identifies existing community assets, which includes informal networks and social support systems, or certain individuals that have particular talents or are able to help others in need and works with them.
- **Social justice and equity:** This is fundamental to community development.
- **Universality:** Services are available to everyone, without requiring means or needs testing.
- **Service Integration:** All service providers know what other services are available or being used.

Strategic Plan and Operational Plan

We developed a three year Strategic and Operational Plan in 2017 for 2018-2021, included in the plan is working towards the full implementation of the Governance Code. The Strategic Plan will be launched in January 2018

Our Board of Directors are the following:

- Barbara Bolger – Chairperson
- Marie Daly - Company Treasurer & Secretary
- Joe Reilly
- Christina Nestor
- Sinead Burke
- Nathanya McDonagh
- Chris O'Brien Lynch

Additional member for the Board of Management

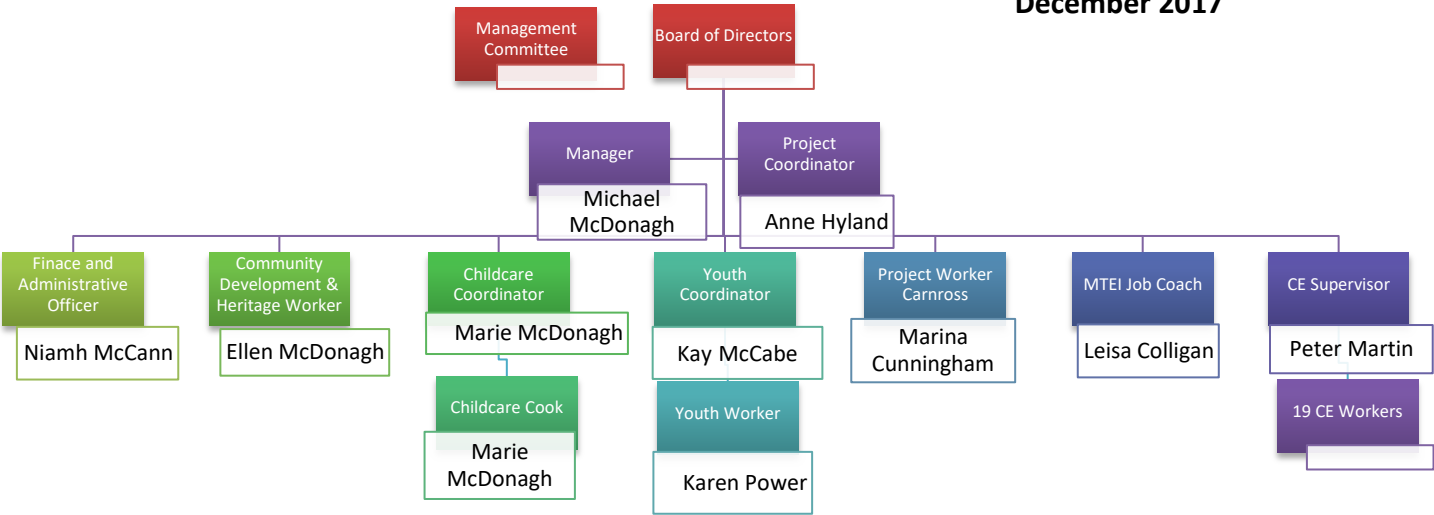
- Leonard Callaghan

We sadly lost a valued member of the Board, Patrick Pryle, in 2017. He brought energy enthusiasm, enterprise and great fun to the organisation. He will be sadly missed and we pay respect and tribute to his family for all his hard work and contribution to Meath Travellers Workshops for the thirteen years of his voluntary service as a Director, Treasurer and friend.

We were devastated to learn at the end of 2017 that the health of our former Chair and Director Joe Reilly had deteriorated. We were honoured to be recognised by him during his speech in the Solstice Arts Centre; for "The Common's Champion" an appreciation night for Joe Reilly. The evening was a wonderful testament to all the hard work Joe has contributed to the local and national community. We were happy to support Joe in any way he saw fit and were delighted to see him continue in his public duties as local councillor.

We continue to encourage Traveller participation on the Management committee and Board of Directors and will be seeking additional Board members in 2018, in particular someone with finance and business expertise in light of the development of Carnaross.

**MTW Organisational Map
December 2017**



**Barbara Bolger –
Chair**



Joe Reilly



**Marie Daly -
Treasurer**



**Nathanya
McDonagh**



Chris O'Brien Lynch



**Leonard
Callaghan -
member**



Sinead Burke



Christina Nestor

MEMBERS AND BOARD OF DIRECTORS 2017

8. Acknowledgements

Links to other organisations

We want to acknowledge and thank all our supporting agencies locally, Regionally Nationally and Internationally. Some of these include:-

Local: *Cultur, Navan Springboard, LTACC (Local Traveller Accommodation Consultative Committee), Local Traveller Health Advisory Committee, Comhairle Na nOg, Meran Group(Meath Equality Rights and Anti-poverty Network), Youth and Family Support Forum, Meath Youth Federation, St Mary's Parish, Claremont Stadium, Meath Local Sports Partnership, Navan Girl Guides, Meath County Childcare Committee, Kells Peoples Resource Centre, Trim and Navan Family Resource Centres, Navan Library, Navan Town Council, Navan Shamrock Festival, Meath Primary Healthcare Project, Unity Centre Windtown, Meath Integration Network (MIN - SICAP), Joint Policing Committee, Citizens Information, Jobmatters, Youthreach Progression.*

Regional: *Traveller Health Unit, Regional Drugs Task Force, Traveller Suicide Working group, NUI Maynooth, Blanchardstown Institute of Technology, Athlone Institute Of Technology*

National: *National Travellers Health Network, Irish Traveller Movement, Pavee Point, The Wheel, National Traveller CDP Network, Leargas, Irish Penal Reform Trust, Traveller Prisoner Initiative, Irish Prison Service and the St Stephen's Green Trust*

And we must not forget...

Thank You!



www.travellerheritage.ie



infontw@eircom.net
adminntw@eircom.net



CYWS Hall
Fairgreen
Navan
Co. Meath



[MeathTravellersWorkshop/](#)



TravellersMeath



046 9027801